





# FOR LEASE

TURNKEY AUTOMOTIVE FACILITY:  $\pm 2,800$  SF ON  $\pm 0.34$  AC

## Site Information

202 N 19th Ave  
Phoenix, AZ 85009

- $\pm 2,800$  SF Automotive Repair Facility
- $\pm 400$  SF Canopy Structure
- $\pm 0.34$  AC (14,810 SF) Site
  - » Option to Expand an Additional  $\pm 0.45$  AC ( $\pm 19,470$  SF) Available
- Zoned C-3
- 1 Mile to I-17
- Frontage on 19th Avenue
- APN#: 109-31-101C
- **Lease Rate: \$7,000 Per Month NNN**



The information contained herein has been obtained from sources we believe to be reliable, however, Rein & Grosseohme and its agents have not conducted any investigation regarding these matters and make no warranty or representation expressed or implied regarding the accuracy or completeness of the information. Interested parties need to verify any information that is critical to their decision process and bear all risk for inaccuracies. References to square footage or age are approximate.



# FOR LEASE

TURNKEY AUTOMOTIVE FACILITY: ±2,800 SF ON ±0.34 AC

## Site Images

**R&G**  
REIN & GROSSEHME  
COMMERCIAL REAL ESTATE



8767 E. Via de Ventura  
Suite 290  
Scottsdale, AZ 85258  
RGcre.com

**MAX SCHUMACHER**, SIOR  
480.214.9403  
Max@RGcre.com

**PATRICK SHEEHAN**, SIOR  
480.214.9405  
Patrick@RGcre.com

**JACK HANSEN**  
480.214.9421  
Jack@RGcre.com

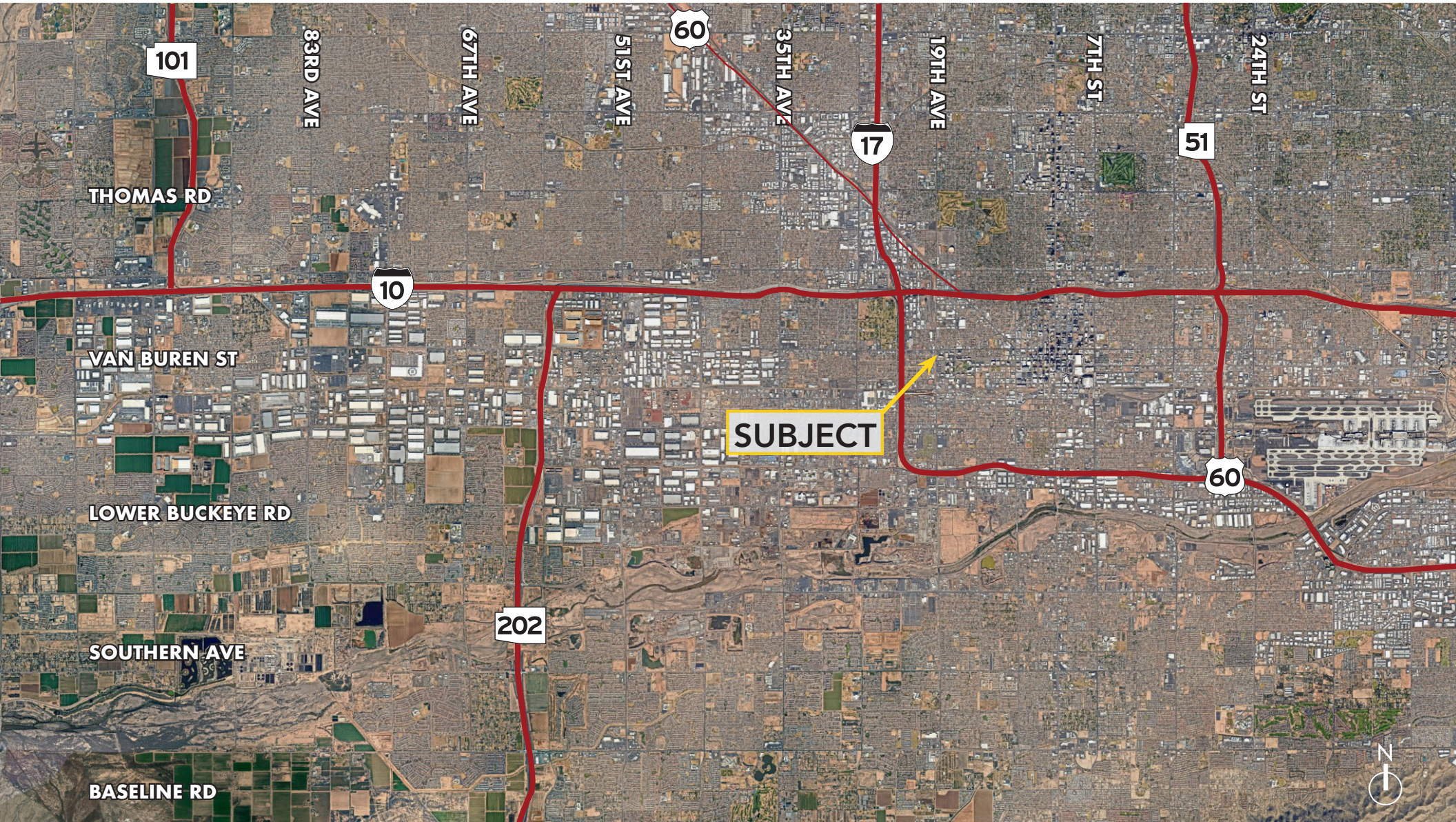


# FOR LEASE

TURNKEY AUTOMOTIVE FACILITY: ±2,800 SF ON ±0.34 AC

Location Maps

**R&G**  
REIN & GROSSEHME  
COMMERCIAL REAL ESTATE



8767 E. Via de Ventura  
Suite 290  
Scottsdale, AZ 85258  
RGcre.com

**MAX SCHUMACHER**, SIOR  
480.214.9403  
Max@RGcre.com

**PATRICK SHEEHAN**, SIOR  
480.214.9405  
Patrick@RGcre.com

**JACK HANSEN**  
480.214.9421  
Jack@RGcre.com