

±5 ACRE LAND PARCEL AVAILABLE FOR SALE

16825 W Victory Lane
Goodyear, Arizona 85338



8767 E. Via de Ventura
Suite 290
Scottsdale, AZ 85258
RGcre.com

MAX SCHUMACHER, SIOR
480.214.9403
Max@RGcre.com

PATRICK SHEEHAN, SIOR
480.214.9405
Patrick@RGcre.com

JACK HANSEN
480.214.9421
Jack@RGcre.com

FOR SALE

±5 ACRE LAND PARCEL AVAILABLE

Site Information

16825 W Victory Lane
Goodyear, Arizona 85338

- ±5 Acres of Land
- Zoned RU-43
- APN: 500-06-019M
- Ideal West Valley Location
 - » 10 Minutes to I-10, Loop 303, and Phoenix-Goodyear Airport
 - » Adjacent to an Amazon Fulfillment Center and Goodyear Crossing Industrial Park
- Sales Price: \$950,000



The information contained herein has been obtained from sources we believe to be reliable, however, Rein & Grosseohme and its agents have not conducted any investigation regarding these matters and make no warranty or representation expressed or implied regarding the accuracy or completeness of the information. Interested parties need to verify any information that is critical to their decision process and bear all risk for inaccuracies. References to square footage or age are approximate.

8767 E. Via de Ventura
Suite 290
Scottsdale, AZ 85258
RGcre.com

MAX SCHUMACHER, SIOR
480.214.9403
Max@RGcre.com

PATRICK SHEEHAN, SIOR
480.214.9405
Patrick@RGcre.com

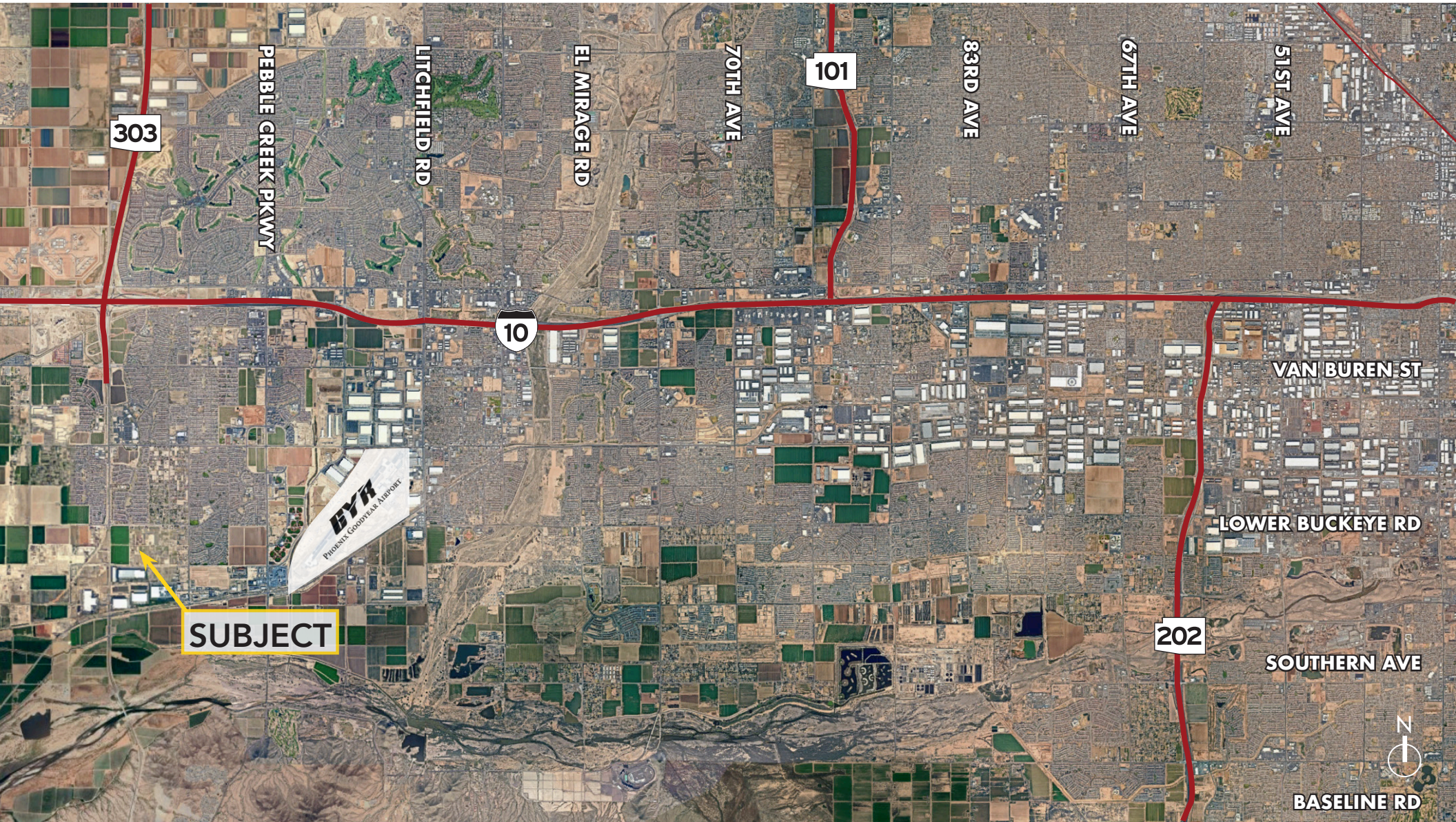
JACK HANSEN
480.214.9421
Jack@RGcre.com

FOR SALE

±5 ACRE LAND PARCEL AVAILABLE

Location Maps

R&G
REIN & GROSSEHME
COMMERCIAL REAL ESTATE



8767 E. Via de Ventura
Suite 290
Scottsdale, AZ 85258
RGcre.com

MAX SCHUMACHER, SIOR
480.214.9403
Max@RGcre.com

PATRICK SHEEHAN, SIOR
480.214.9405
Patrick@RGcre.com

JACK HANSEN
480.214.9421
Jack@RGcre.com