

WEST THOMAS INDUSTRIAL PARK

SWC 29th Ave & Thomas Rd
2901 W Thomas Rd, Phoenix, AZ 85017



8767 E. Via de Ventura
Suite 290
Scottsdale, AZ 85258
RGcre.com

KEVIN ROESSLER
480.214.9425
Kevin@RGcre.com

MAX SCHUMACHER, SIOR
480.214.9403
Max@RGcre.com

JACK HANSEN
480.214.9421
Jack@RGcre.com

FOR LEASE

WEST THOMAS INDUSTRIAL PARK

Site Information

SWC 29th Ave & Thomas Rd
2901 W Thomas Rd, Phoenix, AZ 85017

- Suite 7: ±1,500 SF
- Thomas Road Frontage (32,000+ VPD)
- Direct Access to I-17 and Grand Ave
- Large Monument Signage Available
- Zoned A-2, City of Phoenix
- **Lease Rate: \$1.30 PSF Per Month, Gross**



The information contained herein has been obtained from sources we believe to be reliable, however, Rein & Grosseohme and its agents have not conducted any investigation regarding these matters and make no warranty or representation expressed or implied regarding the accuracy or completeness of the information. Interested parties need to verify any information that is critical to their decision process and bear all risk for inaccuracies. References to square footage or age are approximate.

8767 E. Via de Ventura
Suite 290
Scottsdale, AZ 85258
RGcre.com

KEVIN ROESSLER
480.214.9425
Kevin@RGcre.com

MAX SCHUMACHER, SIOR
480.214.9403
Max@RGcre.com

JACK HANSEN
480.214.9421
Jack@RGcre.com

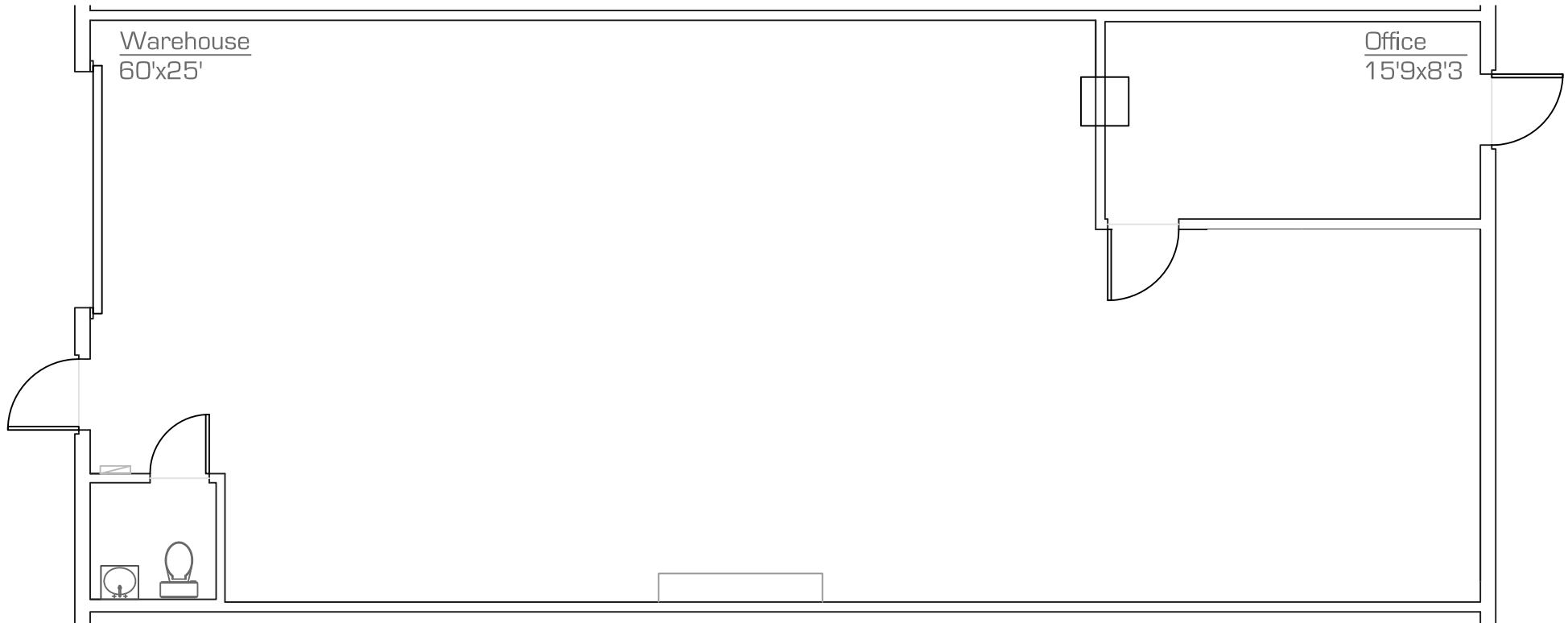
FOR LEASE

WEST THOMAS INDUSTRIAL PARK

Suite 7 – Floor Plan

SWC 29th Ave & Thomas Rd
2901 W Thomas Rd, Phoenix, AZ 85017

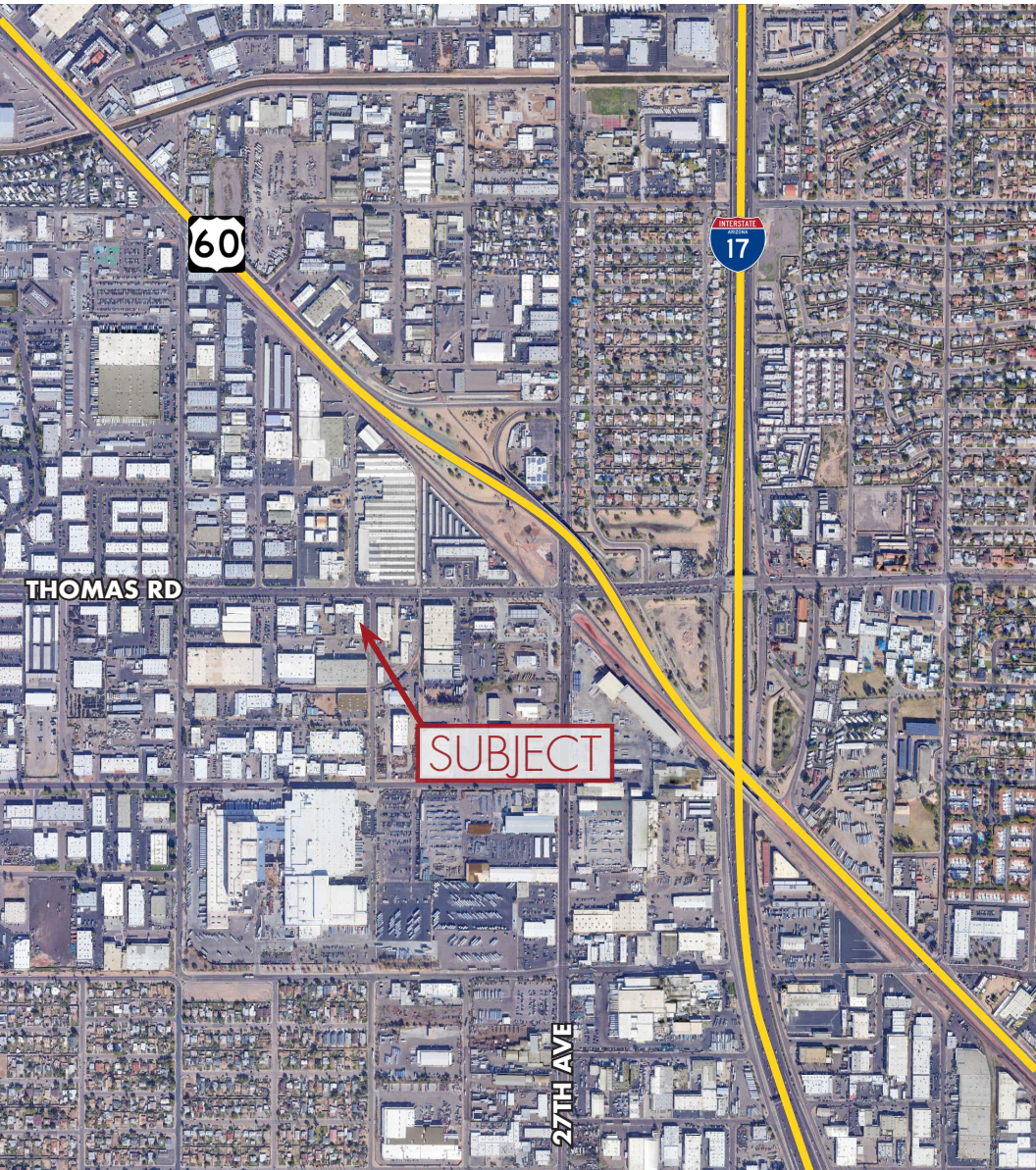
- Suite 7: ±1,500 SF



FOR LEASE

WEST THOMAS INDUSTRIAL PARK

Location Maps



8767 E. Via de Ventura
Suite 290
Scottsdale, AZ 85258
RGcre.com

KEVIN ROESSLER
480.214.9425
Kevin@RGcre.com

MAX SCHUMACHER, SIOR
480.214.9403
Max@RGcre.com

JACK HANSEN
480.214.9421
Jack@RGcre.com