



FOR LEASE

±8,200 SF INDUSTRIAL/MANUFACTURING SPACE WITH HEAVY POWER

Site Information

1411 E Hadley St
Phoenix, Arizona 85034

- ±8,200 SF Building
 - » ±7,000 SF Warehouse
 - » ±1,200 SF Office
- Zoned A-2 (Heavy Industrial), City of Phoenix
- Power: 2,700 AMPS 480V 3 Phase
- Two (2) Grade Level Doors
 - » One (1) 12' W x 14' H
 - » One (1) 10' W x 12' H
- **Lease Rate: \$1.05 PSF Industrial Gross**



The information contained herein has been obtained from sources we believe to be reliable, however, Rein & Grosseohme and its agents have not conducted any investigation regarding these matters and make no warranty or representation expressed or implied regarding the accuracy or completeness of the information. Interested parties need to verify any information that is critical to their decision process and bear all risk for inaccuracies. References to square footage or age are approximate.

8767 E. Via de Ventura
Suite 290
Scottsdale, AZ 85258
RGcre.com

MAX SCHUMACHER, SIOR
480.214.9403
Max@RGcre.com

PATRICK SHEEHAN, SIOR
480.214.9405
Patrick@RGcre.com

JACK HANSEN
480.214.9421
Jack@RGcre.com

FOR LEASE

±8,200 SF INDUSTRIAL/MANUFACTURING SPACE WITH HEAVY POWER

Site Images



8767 E. Via de Ventura
Suite 290
Scottsdale, AZ 85258
RGcre.com

MAX SCHUMACHER, SIOR
480.214.9403
Max@RGcre.com

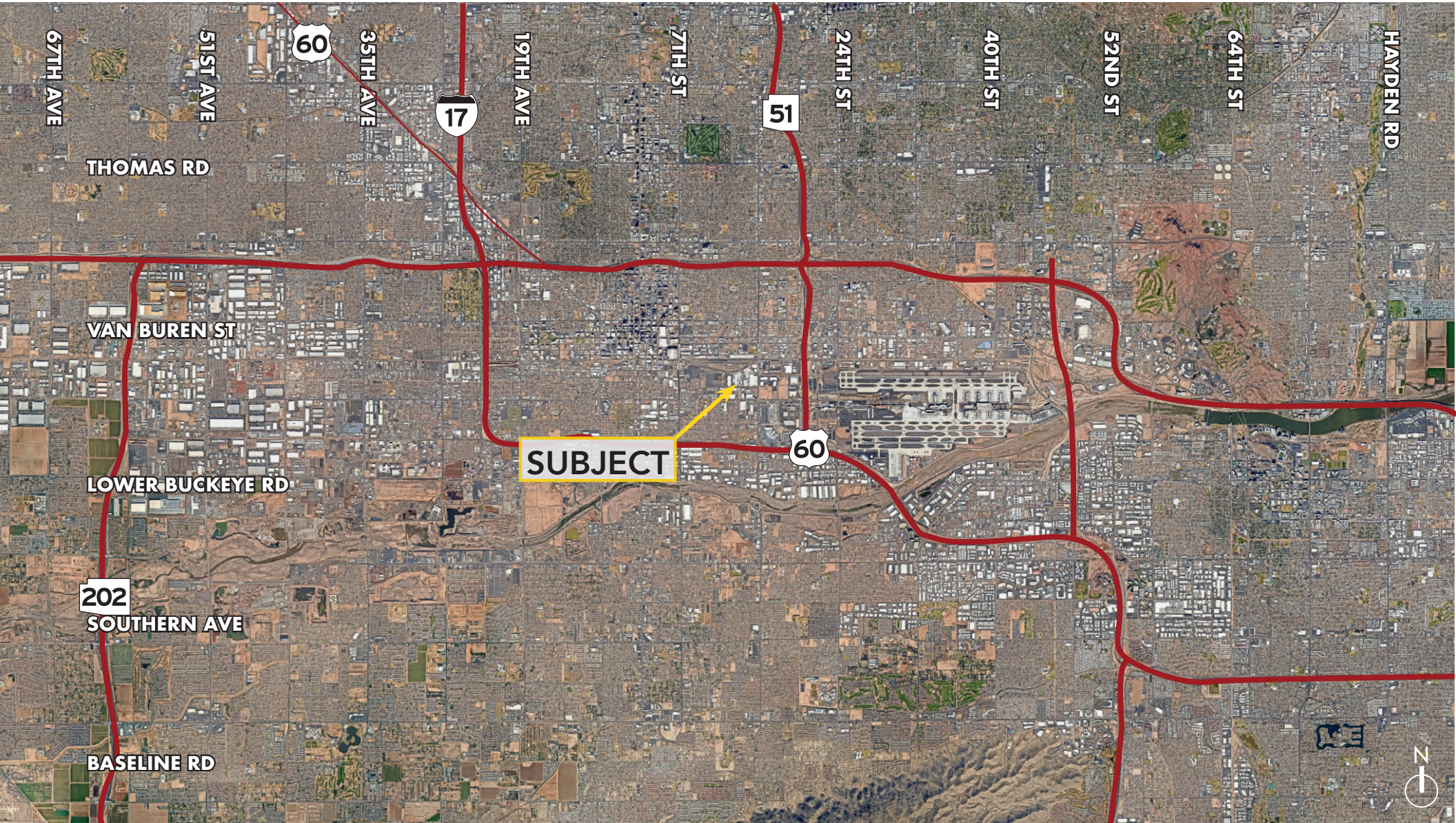
PATRICK SHEEHAN, SIOR
480.214.9405
Patrick@RGcre.com

JACK HANSEN
480.214.9421
Jack@RGcre.com

FOR LEASE

±8,200 SF INDUSTRIAL/MANUFACTURING SPACE WITH HEAVY POWER

Location Map



8767 E. Via de Ventura
Suite 290
Scottsdale, AZ 85258
RGcre.com

MAX SCHUMACHER, SIOR
480.214.9403
Max@RGcre.com

PATRICK SHEEHAN, SIOR
480.214.9405
Patrick@RGcre.com

JACK HANSEN
480.214.9421
Jack@RGcre.com