

**±5.17 ACRE INDUSTRIAL OUTDOOR STORAGE (IOS) SITE WITH ±6,600 SF CANOPY  
FOR LEASE**

5307 W Missouri Ave Glendale, AZ



8767 E. Via de Ventura  
Suite 290  
Scottsdale, AZ 85258  
RGcre.com

**MAX SCHUMACHER, SIOR**  
480.214.9403  
Max@RGcre.com

**PATRICK SHEEHAN, SIOR**  
480.214.9405  
Patrick@RGcre.com

**JACK HANSEN**  
480.214.9421  
Jack@RGcre.com



# FOR LEASE

±5.17 ACRE INDUSTRIAL OUTDOOR STORAGE (IOS) SITE WITH ±6,600 SF CANOPY

## Site Information

5307 W Missouri Ave  
Glendale, AZ

- ±5.17 AC (225,205 SF) Site
- ±6,600 SF Canopy Structure
- Located 1 Mile From US-60
- Fully Fenced and Secured Site
- Zoned M-2, City of Glendale
- Portion of APN #144-34-006J
- Ideal Industrial Outdoor Storage Site
- Potential for BTS up to ±47,000 SF
- Landlord is the Process of Receiving Approval for 2 Additional Means of Ingress and Egress
- Landlord is Willing to Add Lights and Re-Gravel the Space Prior to the Exit of the Current Tenant
- Available Q2 2025



The information contained herein has been obtained from sources we believe to be reliable, however, Rein & Grosseohme and its agents have not conducted any investigation regarding these matters and make no warranty or representation expressed or implied regarding the accuracy or completeness of the information. Interested parties need to verify any information that is critical to their decision process and bear all risk for inaccuracies. References to square footage or age are approximate.



# FOR LEASE

±5.17 ACRE INDUSTRIAL OUTDOOR STORAGE (IOS) SITE WITH ±6,600 SF CANOPY

## Site Images



8767 E. Via de Ventura  
Suite 290  
Scottsdale, AZ 85258  
RGcre.com

**MAX SCHUMACHER**, SIOR  
480.214.9403  
Max@RGcre.com

**PATRICK SHEEHAN**, SIOR  
480.214.9405  
Patrick@RGcre.com

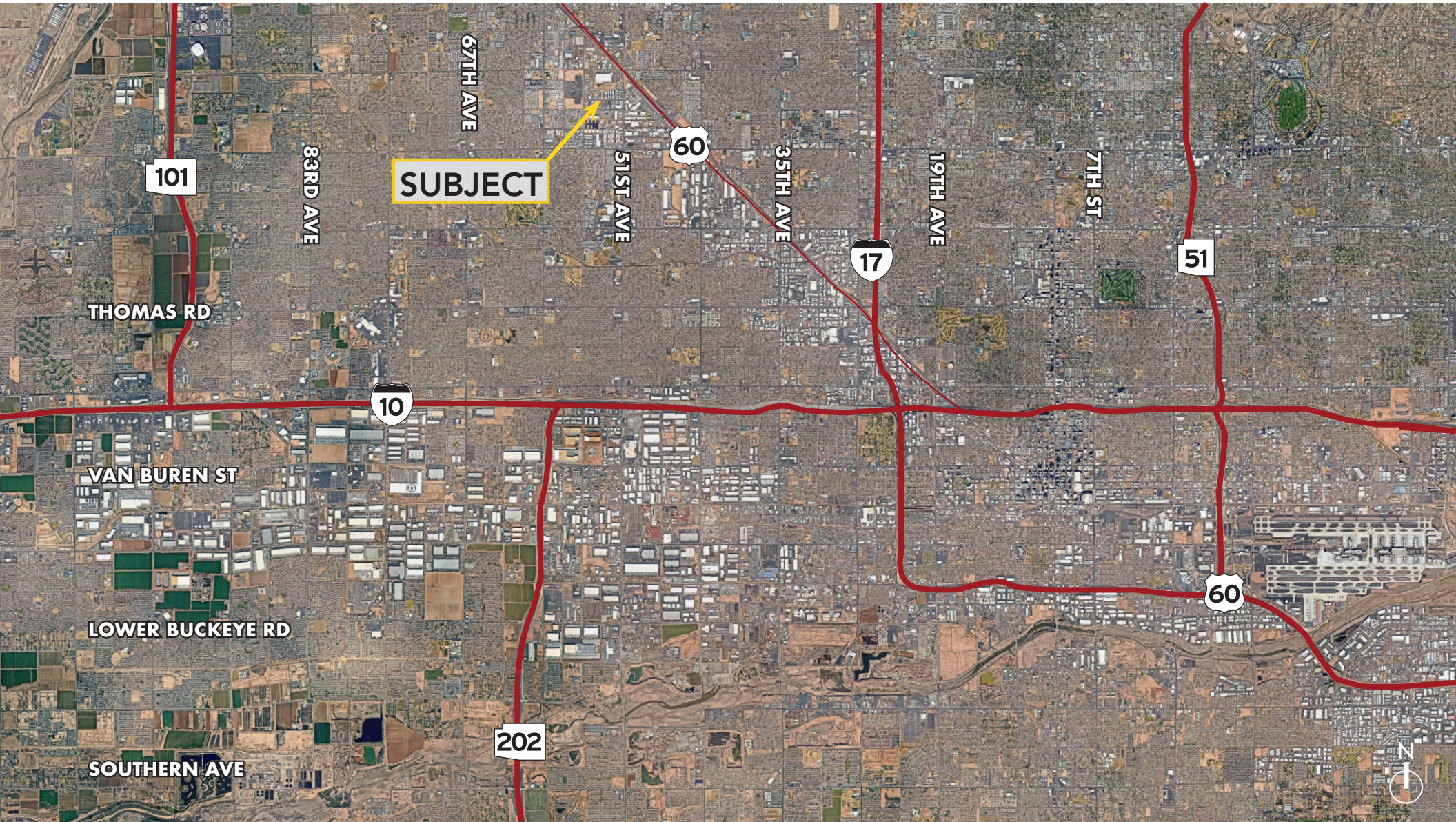
**JACK HANSEN**  
480.214.9421  
Jack@RGcre.com



# FOR LEASE

±5.17 ACRE INDUSTRIAL OUTDOOR STORAGE (IOS) SITE WITH ±6,600 SF CANOPY

Location Maps



8767 E. Via de Ventura  
Suite 290  
Scottsdale, AZ 85258  
RGcre.com

**MAX SCHUMACHER**, SIOR  
480.214.9403  
Max@RGcre.com

**PATRICK SHEEHAN**, SIOR  
480.214.9405  
Patrick@RGcre.com

**JACK HANSEN**  
480.214.9421  
Jack@RGcre.com