



±10,300 SF ON ±1.87 AC | IDEAL CONTRACTOR FACILITY FOR SALE

2801 - 2817 E Illini St. / 3919 S 28th St.
Phoenix, Arizona 85040



ILLINI ST

28TH ST

8767 E. Via de Ventura
Suite 290
Scottsdale, AZ 85258
RGcre.com

MAX SCHUMACHER, SIOR
480.214.9403
Max@RGcre.com

PATRICK SHEEHAN, SIOR
480.214.9405
Patrick@RGcre.com

JACK HANSEN
480.214.9421
Jack@RGcre.com

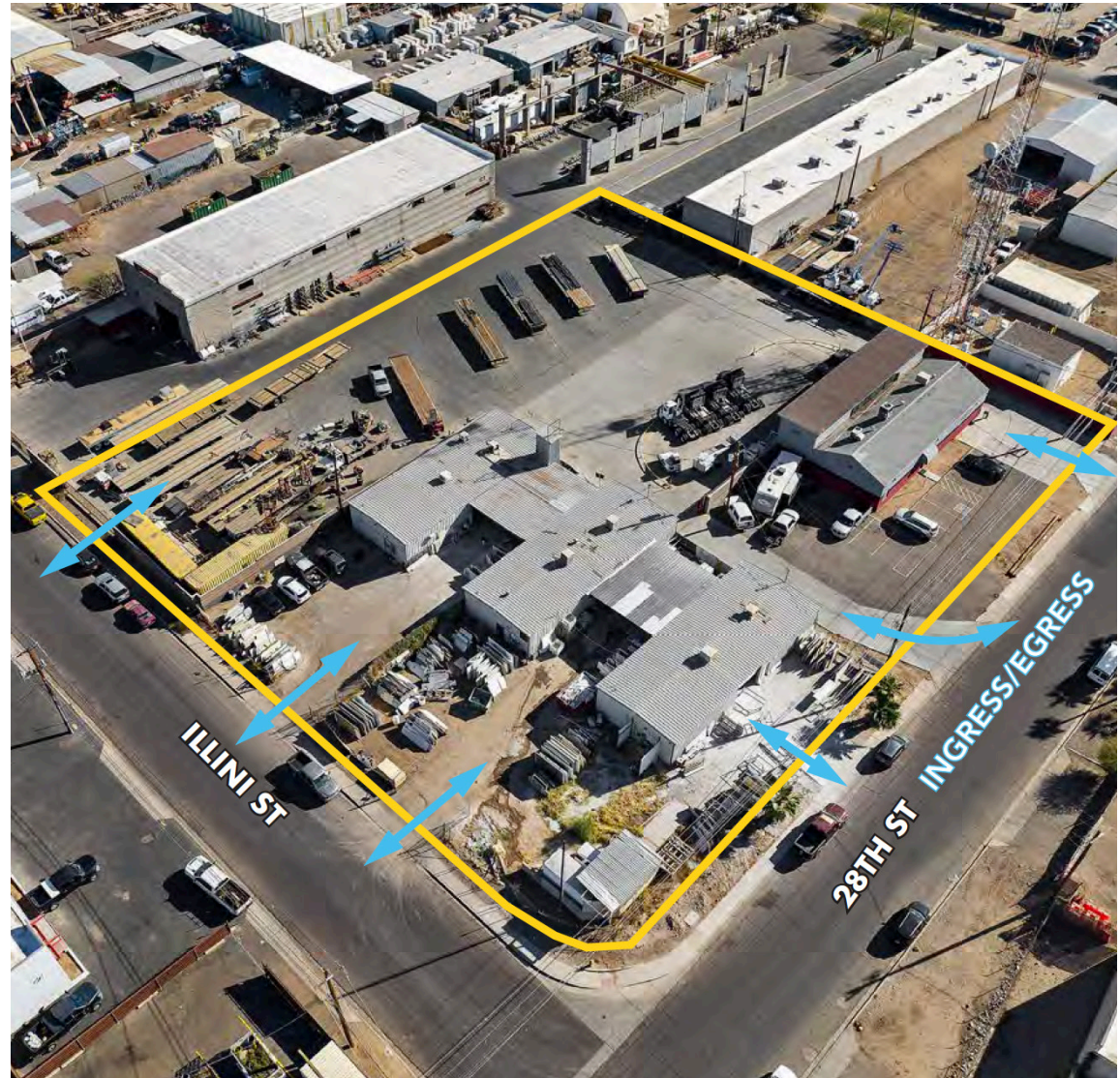
FOR SALE

±10,300 SF ON ±1.87 AC | IDEAL CONTRACTOR FACILITY

Site Information

2801 - 2817 E Illini St. & 3919 S 28th St.
Phoenix, Arizona 85040

- ±10,300 SF Industrial Office/Warehouse Buildings
 - » ±7,000 SF Warehouse (3 Buildings)
 - » ±3,300 SF Office
- ±1.87 AC (81,457 SF) Site
- ±0.63 AC (27,478 SF) Reinforced Concrete Yard
- Six (6) Points of Ingress/Egress
- Located in a Qualified Opportunity Zone
- Zoned A-1/A-2
- Adjacent to I-10 and Phoenix Sky Harbor Airport
- APN: 122-19-031C, 122-19-029B, 122-19-031D, 122-19-027
- Power: 1,050 AMPS To Site (Buyer to Verify)



The information contained herein has been obtained from sources we believe to be reliable, however, Rein & Grosseohme and its agents have not conducted any investigation regarding these matters and make no warranty or representation expressed or implied regarding the accuracy or completeness of the information. Interested parties need to verify any information that is critical to their decision process and bear all risk for inaccuracies. References to square footage or age are approximate.

FOR SALE

±10,300 SF ON ±1.87 AC | IDEAL CONTRACTOR FACILITY

Exterior Site Images



8767 E. Via de Ventura
Suite 290
Scottsdale, AZ 85258
RGcre.com

MAX SCHUMACHER, SIOR
480.214.9403
Max@RGcre.com

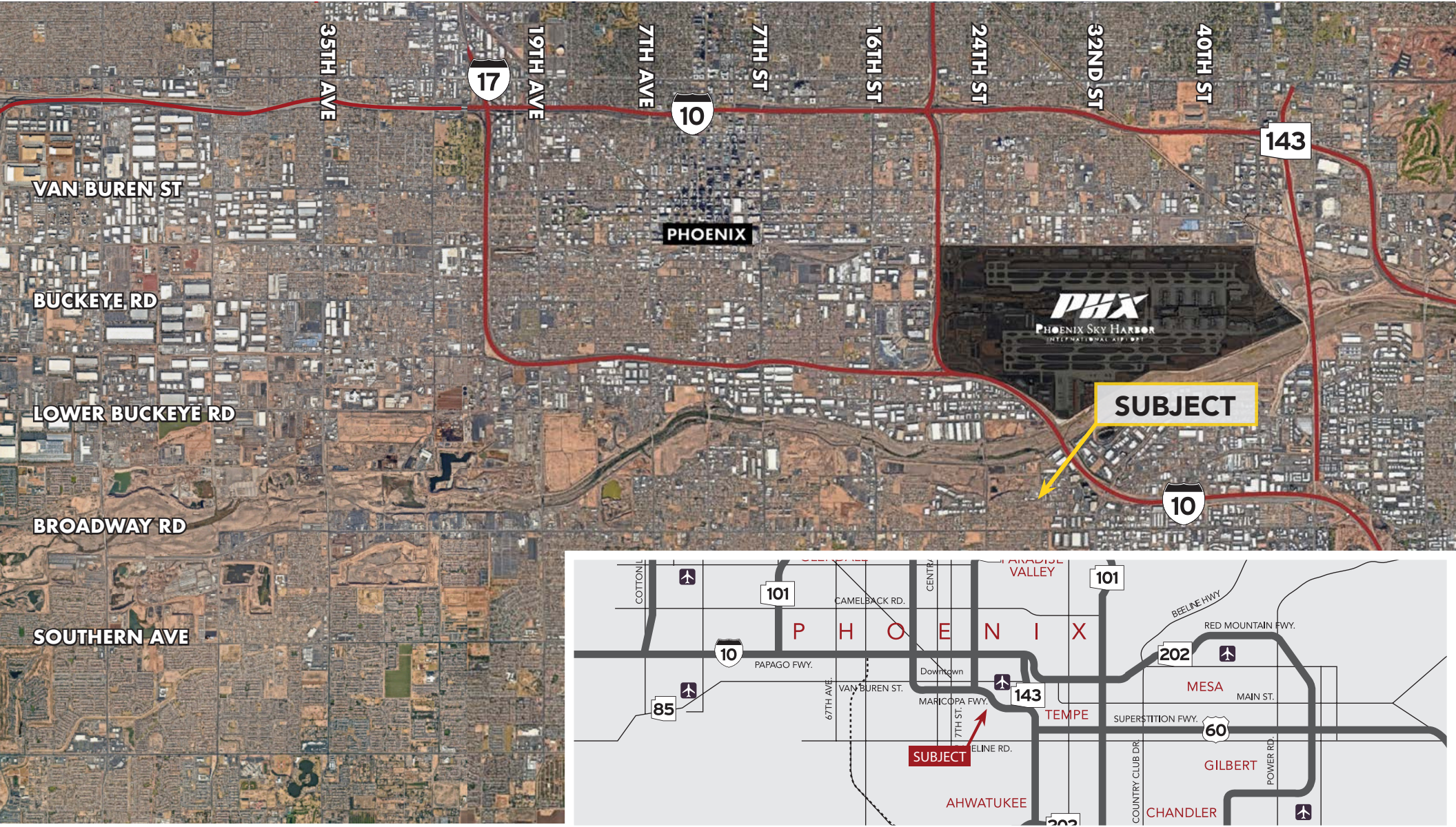
PATRICK SHEEHAN, SIOR
480.214.9405
Patrick@RGcre.com

JACK HANSEN
480.214.9421
Jack@RGcre.com

FOR SALE

±10,300 SF ON ±1.87 AC | IDEAL CONTRACTOR FACILITY

Location Map



8767 E. Via de Ventura
Suite 290
Scottsdale, AZ 85258
RGcre.com

MAX SCHUMACHER, SIOR
480.214.9403
Max@RGcre.com

PATRICK SHEEHAN, SIOR
480.214.9405
Patrick@RGcre.com

JACK HANSEN
480.214.9421
Jack@RGcre.com