

**±5.17 ACRE INDUSTRIAL OUTDOOR STORAGE (IOS) SITE WITH ±6,600 SF CANOPY
FOR LEASE**

5307 W Missouri Ave Glendale, AZ



8767 E. Via de Ventura
Suite 290
Scottsdale, AZ 85258
RGcre.com

MAX SCHUMACHER, SIOR
480.214.9403
Max@RGcre.com

PATRICK SHEEHAN, SIOR
480.214.9405
Patrick@RGcre.com

JACK HANSEN
480.214.9421
Jack@RGcre.com

FOR LEASE

±5.17 ACRE INDUSTRIAL OUTDOOR STORAGE (IOS) SITE WITH ±6,600 SF CANOPY

Site Information

5307 W Missouri Ave
Glendale, AZ

- ±5.17 AC (225,205 SF) Site
- ±6,600 SF Canopy Structure
- Located 1 Mile From US-60
- Fully Fenced and Secured Site
- Zoned M-2, City of Glendale
- Portion of APN #144-34-006J
- Ideal Industrial Outdoor Storage Site
- Available Q2 2025



The information contained herein has been obtained from sources we believe to be reliable, however, Rein & Grosseohme and its agents have not conducted any investigation regarding these matters and make no warranty or representation expressed or implied regarding the accuracy or completeness of the information. Interested parties need to verify any information that is critical to their decision process and bear all risk for inaccuracies. References to square footage or age are approximate.

8767 E. Via de Ventura
Suite 290
Scottsdale, AZ 85258
RGcre.com

MAX SCHUMACHER, SIOR
480.214.9403
Max@RGcre.com

PATRICK SHEEHAN, SIOR
480.214.9405
Patrick@RGcre.com

JACK HANSEN
480.214.9421
Jack@RGcre.com

FOR LEASE

±5.17 ACRE INDUSTRIAL OUTDOOR STORAGE (IOS) SITE WITH ±6,600 SF CANOPY

Site Images



8767 E. Via de Ventura
Suite 290
Scottsdale, AZ 85258
RGcre.com

MAX SCHUMACHER, SIOR
480.214.9403
Max@RGcre.com

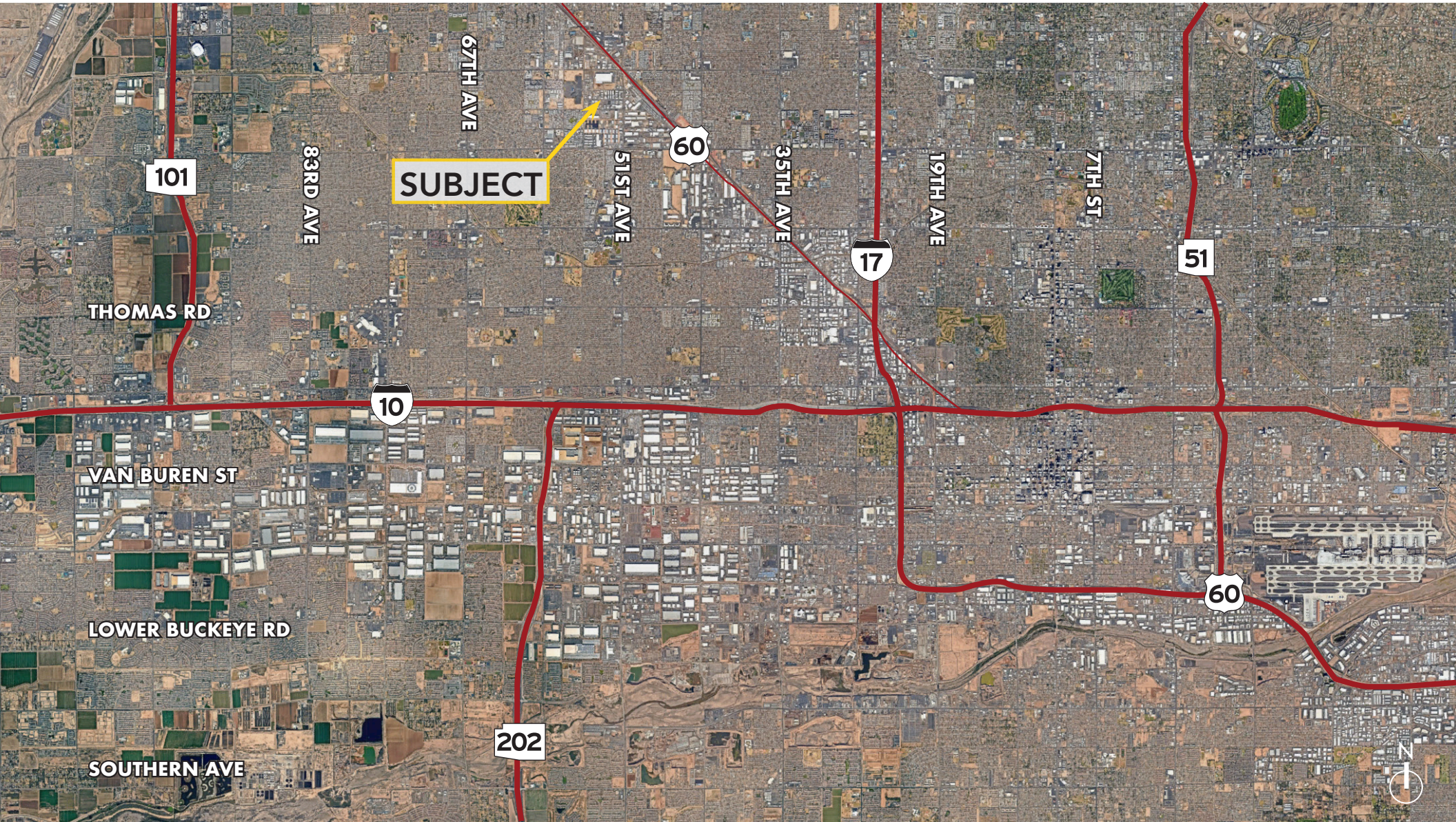
PATRICK SHEEHAN, SIOR
480.214.9405
Patrick@RGcre.com

JACK HANSEN
480.214.9421
Jack@RGcre.com

FOR LEASE

±5.17 ACRE INDUSTRIAL OUTDOOR STORAGE (IOS) SITE WITH ±6,600 SF CANOPY

Location Maps



8767 E. Via de Ventura
Suite 290
Scottsdale, AZ 85258
RGcre.com

MAX SCHUMACHER, SIOR
480.214.9403
Max@RGcre.com

PATRICK SHEEHAN, SIOR
480.214.9405
Patrick@RGcre.com

JACK HANSEN
480.214.9421
Jack@RGcre.com