

## DOBSON RANCH

S/ SEC Baseline & Dobson  
2051 S. Dobson Rd, Mesa, AZ



MONUMENT SIGNAGE AVAILABLE



# FOR LEASE

## DOBSON RANCH

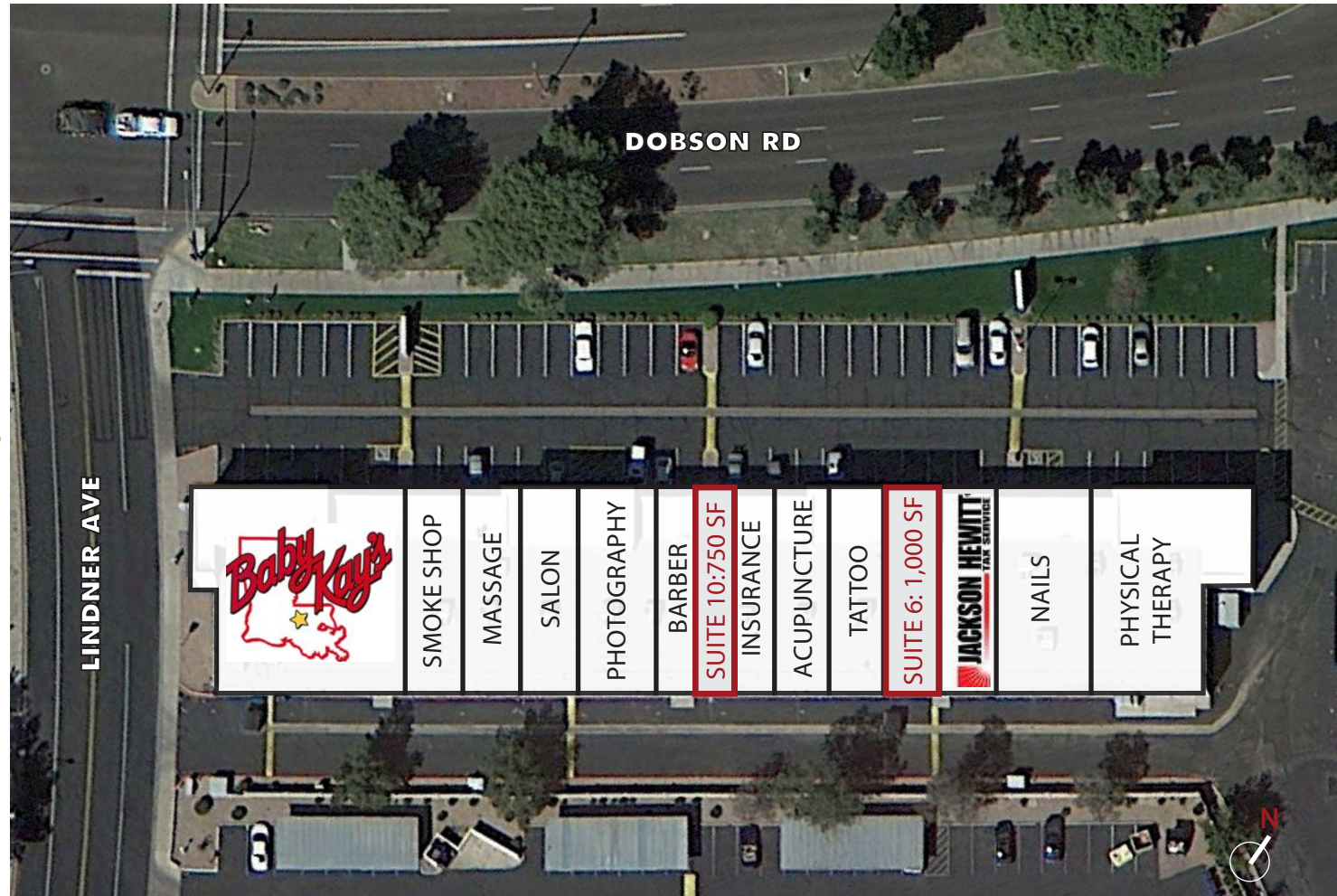
### Site Information

S/ SEC Baseline & Dobson  
2051 S. Dobson Rd, Mesa, AZ

- ±750 & 1,000 SF Suites Available
- Excellent Street Visibility
- Easy Access to US-60 and Loop 101
- Serving the Communities of Dobson Ranch and Dobson Shores
- Heavy Traffic Intersection- 54,000 VPD
- Monument Signage Available

#### AVAILABLE SUITES

- Suite 6: ±1,000 SF Available  
Turn-key Pet Grooming Space
- Suite 10: ±750 SF  
Former Jewelry Store



The information contained herein has been obtained from sources we believe to be reliable, however, Rein & Grosseohme and its agents have not conducted any investigation regarding these matters and make no warranty or representation expressed or implied regarding the accuracy or completeness of the information. Interested parties need to verify any information that is critical to their decision process and bear all risk for inaccuracies. References to square footage or age are approximate.

8767 E. Via de Ventura  
Suite 290  
Scottsdale, AZ 85258

**KEVIN ROESSLER**

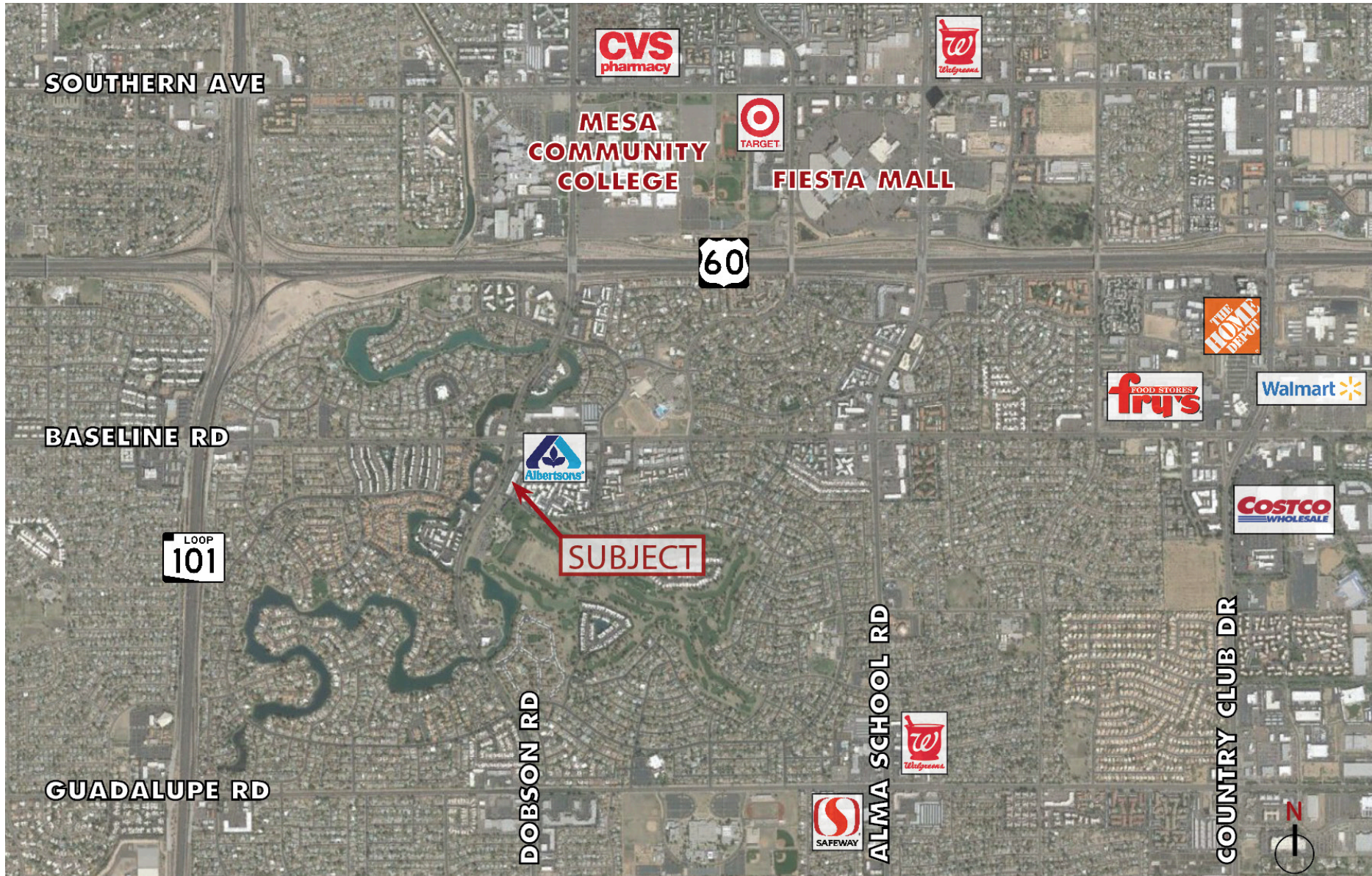
480.214.9425  
Kevin@RGcre.com



# FOR LEASE

DOBSON RANCH

Location Maps



8767 E. Via de Ventura  
Suite 290  
Scottsdale, AZ 85258

**KEVIN ROESSLER**

480.214.9425  
Kevin@RGcre.com