

**±0.78 ACRE CONTRACTOR'S YARD / INDUSTRIAL OUTDOOR STORAGE SITE
FOR SALE**

8607 N 77th Dr Peoria, Arizona 85345



8767 E. Via de Ventura
Suite 290
Scottsdale, AZ 85258
RGcre.com

JACK HANSEN
480.214.9421
Jack@RGcre.com

MAX SCHUMACHER, SIOR
480.214.9403
Max@RGcre.com

PATRICK SHEEHAN, SIOR
480.214.9405
Patrick@RGcre.com

FOR SALE

± 1.57 ACRE CONTRACTOR'S YARD / INDUSTRIAL OUTDOOR STORAGE SITE

Site Information

8607 N 77th Drive
Peoria, Arizona 85345

- ±0.78 Acres (34,199 SF of Land)
- Zoned I-1 (Light Industrial), City of Peoria
- Fully secure site with 8-foot block wall perimeter
- Electronic gate
- To be delivered fully paved with GSA covering
- 0.5 miles to US-60/ Grand Avenue & 2.5 miles to Loop 101
- Parcel #: 142-20-118
- Estimated completion date December 1, 2024
- Sales Price: \$920,000



The information contained herein has been obtained from sources we believe to be reliable, however, Rein & Grosseohme and its agents have not conducted any investigation regarding these matters and make no warranty or representation expressed or implied regarding the accuracy or completeness of the information. Interested parties need to verify any information that is critical to their decision process and bear all risk for inaccuracies. References to square footage or age are approximate.

8767 E. Via de Ventura
Suite 290
Scottsdale, AZ 85258
RGcre.com

JACK HANSEN
480.214.9421
Jack@RGcre.com

MAX SCHUMACHER, SIOR
480.214.9403
Max@RGcre.com

PATRICK SHEEHAN, SIOR
480.214.9405
Patrick@RGcre.com

FOR SALE

± 1.57 ACRE CONTRACTOR'S YARD / INDUSTRIAL OUTDOOR STORAGE SITE

Site Images



8767 E. Via de Ventura
Suite 290
Scottsdale, AZ 85258
RGcre.com

JACK HANSEN
480.214.9421
Jack@RGcre.com

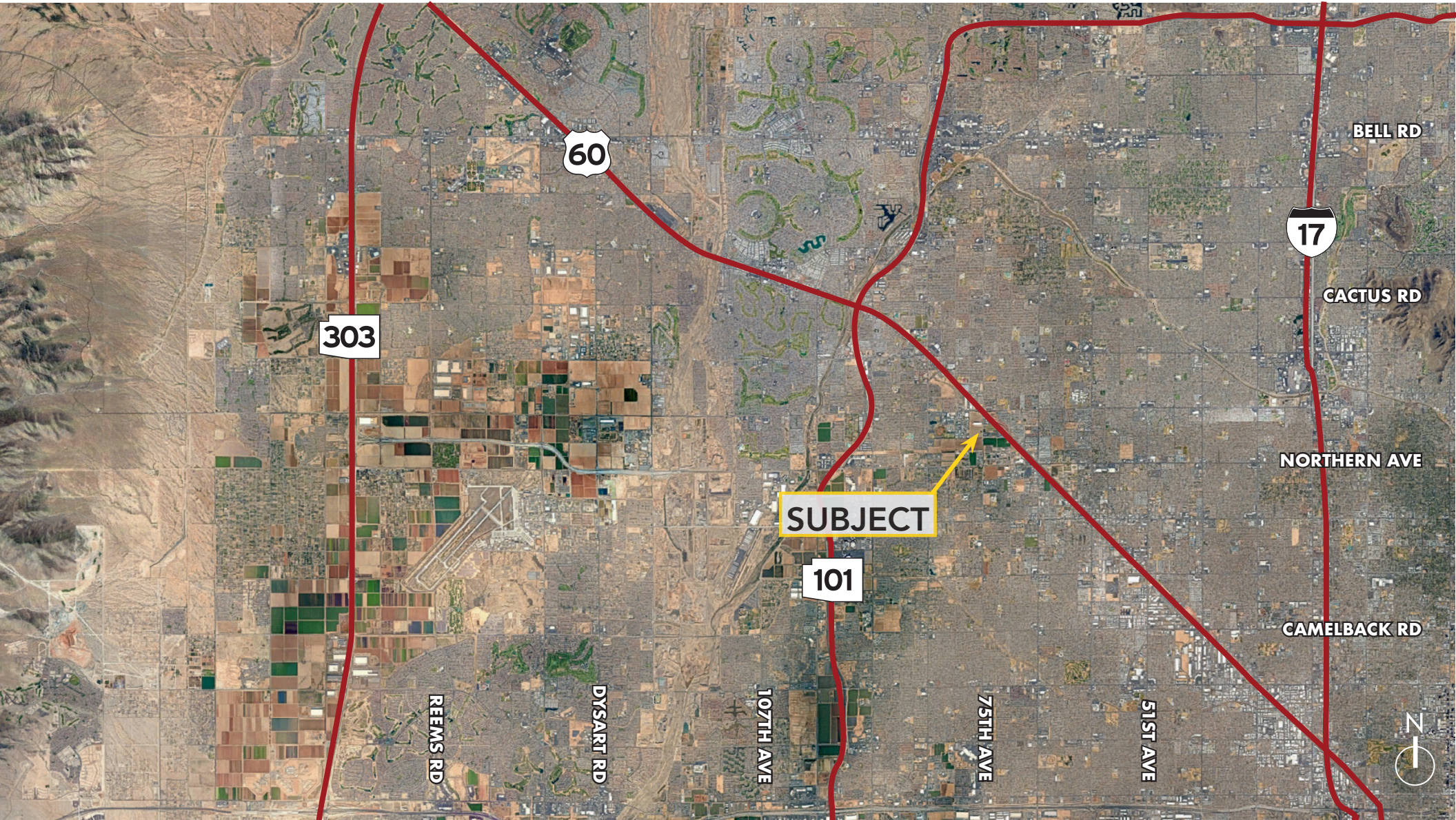
MAX SCHUMACHER, SIOR
480.214.9403
Max@RGcre.com

PATRICK SHEEHAN, SIOR
480.214.9405
Patrick@RGcre.com

FOR SALE

± 1.57 ACRE CONTRACTOR'S YARD / INDUSTRIAL OUTDOOR STORAGE SITE

Location Maps



8767 E. Via de Ventura
Suite 290
Scottsdale, AZ 85258
RGcre.com

JACK HANSEN
480.214.9421
Jack@RGcre.com

MAX SCHUMACHER, SIOR
480.214.9403
Max@RGcre.com

PATRICK SHEEHAN, SIOR
480.214.9405
Patrick@RGcre.com