

BELL MAR PLAZA

11294 - 11340 W. Bell Rd.

Surprise, AZ 85378



8767 E. Via de Ventura
Suite 290
Scottsdale, AZ 85258
RGcre.com

JARED LIVELY

480.214.9411
Jared@RGcre.com

FOR LEASE

BELL MAR PLAZA

Site Information

11294-11340 W. Bell Rd.

Surprise, AZ 85378

FEATURES

- Class A – Mixed Use Project in Surprise
- ±72,280 SF on Bell Road
- Great Family Oriented Tenant Mix
- Unique Architecture

AVAILABLE SUITES

- Suite 128: ±1,440 SF
- Suite A121: ±1,209 SF
- Suite C105: ±1,118 SF
- Suite C107: ±4,273 SF

The information contained herein has been obtained from sources we believe to be reliable, however, Rein & Grosseohme and its agents have not conducted any investigation regarding these matters and make no warranty or representation expressed or implied regarding the accuracy or completeness of the information. Interested parties need to verify any information that is critical to their decision process and bear all risk for inaccuracies. References to square footage or age are approximate.



8767 E. Via de Ventura
Suite 290
Scottsdale, AZ 85258
RGcre.com

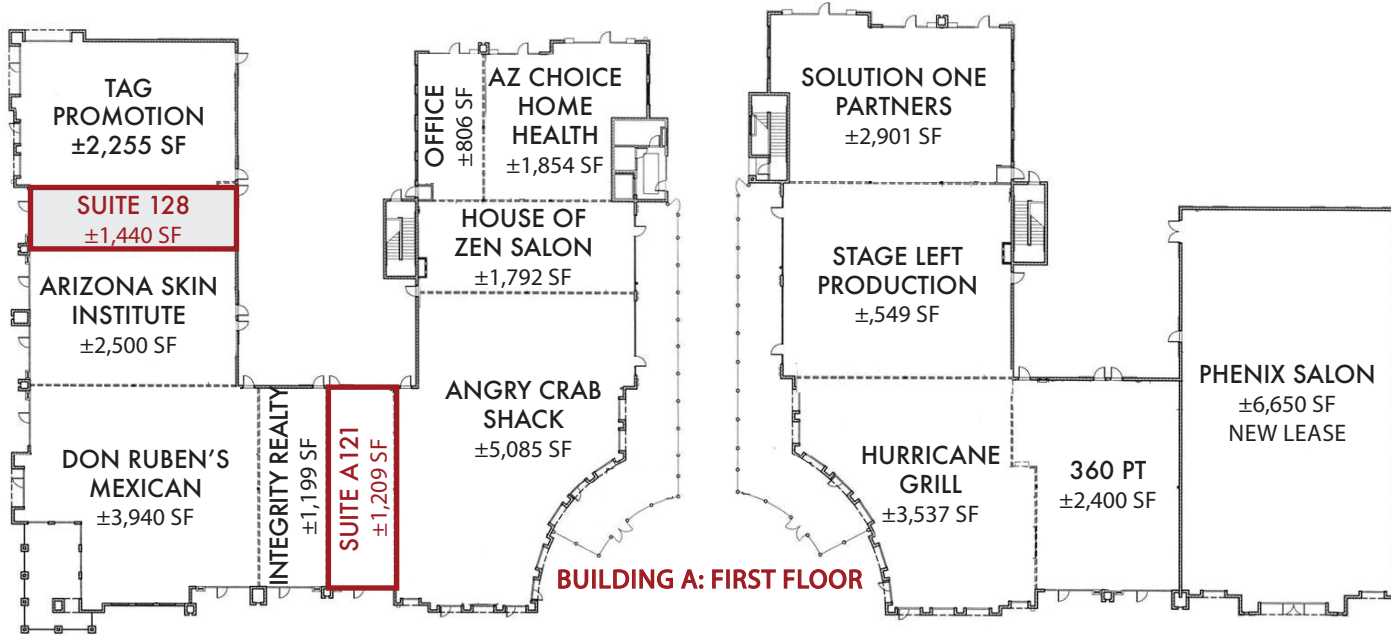
JARED LIVELY

480.214.9411
Jared@RGcre.com

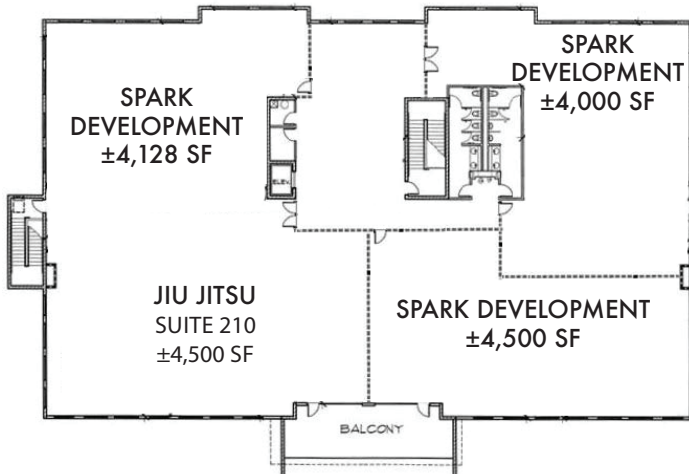
FOR LEASE

BELL MAR PLAZA

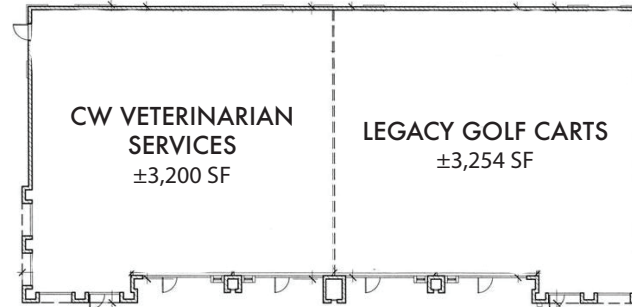
Available Suites



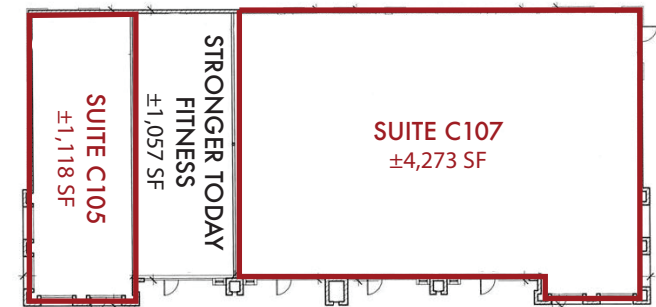
- Suite 128: ±1,440 SF
- Suite A121: ±1,209 SF
- Suite C105: ±1,118 SF
- Suite C107: ±4,273 SF



BUILDING A: SECOND FLOOR



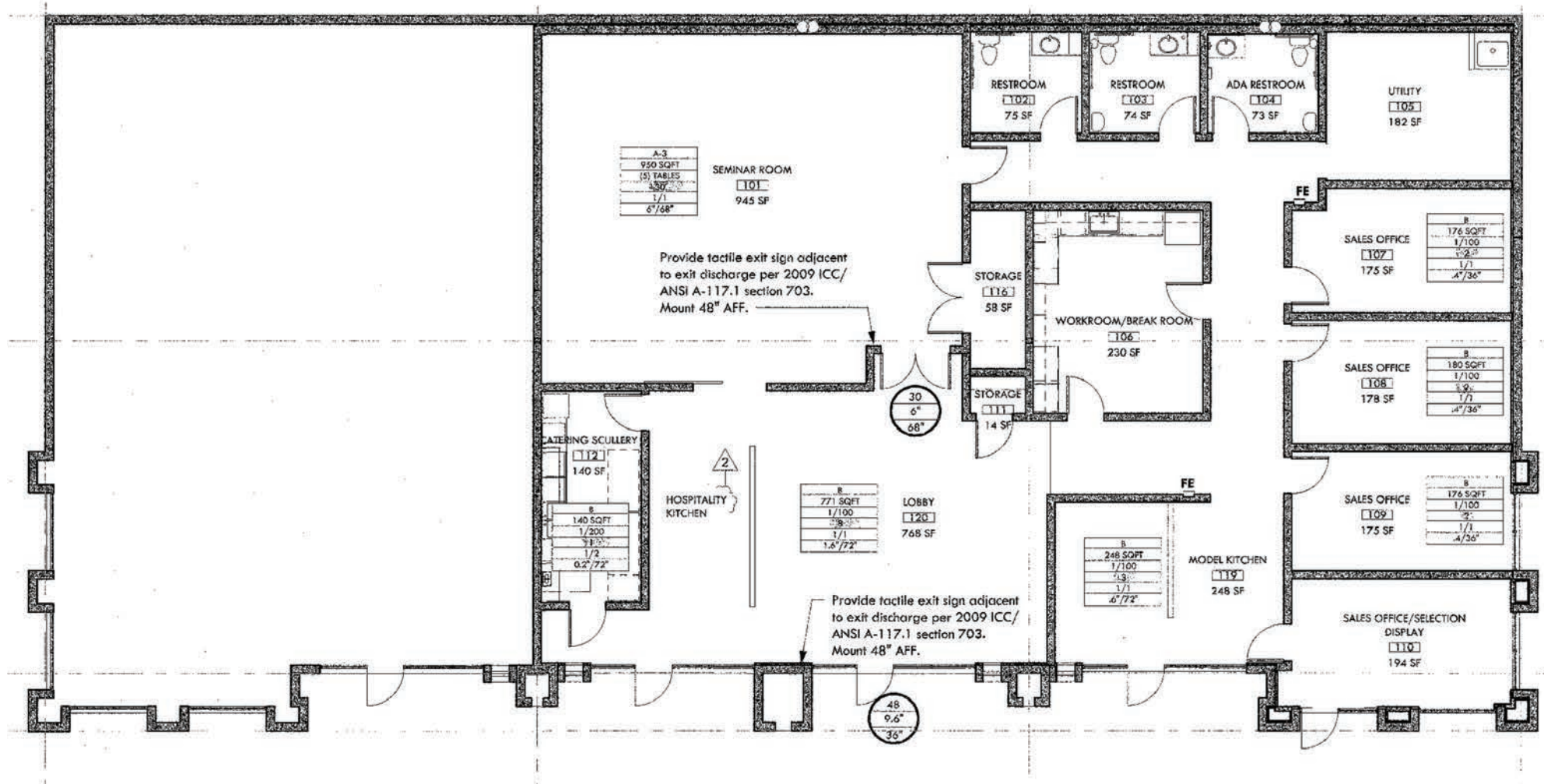
BUILDING B



BUILDING C

FOR LEASE

BELL MAR PLAZA
C107 Office Space Plan



8767 E. Via de Ventura
Suite 290
Scottsdale, AZ 85258
RGcre.com

JARED LIVELY

480.214.9411
Jared@RGcre.com

FOR LEASE

BELL MAR PLAZA

Property Photos

R&G
REIN & GROSSEHME
COMMERCIAL REAL ESTATE



8767 E. Via de Ventura
Suite 290
Scottsdale, AZ 85258
RGcre.com

JARED LIVELY

480.214.9411
Jared@RGcre.com

FOR LEASE

BELL MAR PLAZA
Property Photos

R&G
REIN & GROSSEHME
COMMERCIAL REAL ESTATE



8767 E. Via de Ventura
Suite 290
Scottsdale, AZ 85258
RGcre.com

JARED LIVELY

480.214.9411
Jared@RGcre.com

FOR LEASE

BELL MAR PLAZA

Location Map



8767 E. Via de Ventura
Suite 290
Scottsdale, AZ 85258
RGcre.com

JARED LIVELY

480.214.9411
Jared@RGcre.com